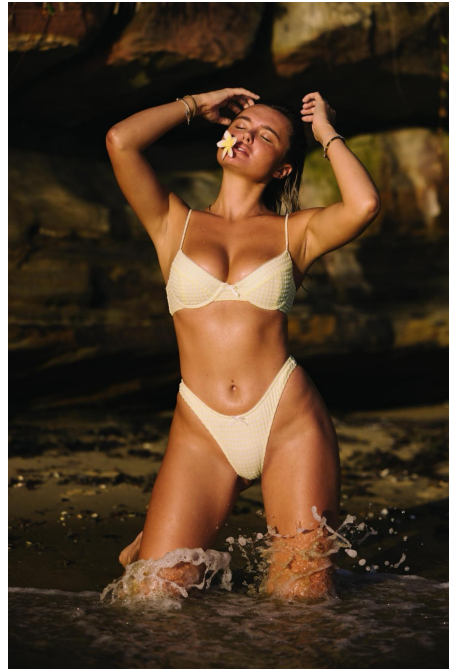


A black and white fashion portrait of a woman with long, straight blonde hair. She is wearing a dark, structured blazer over a light-colored top. Her hands are clasped together near her face, and she is looking directly at the camera with a serious expression. The background is a plain, light-colored wall.

EMILY
BELL

BONDI
MODEL MANAGEMENT



Height: 167 Bust: 86 Waist: 69 Hips: 89 Dress: 8 Shoe: 36 Hair: Blonde Eyes: Hazel

www.bondimodelmanagement.com/emily

